

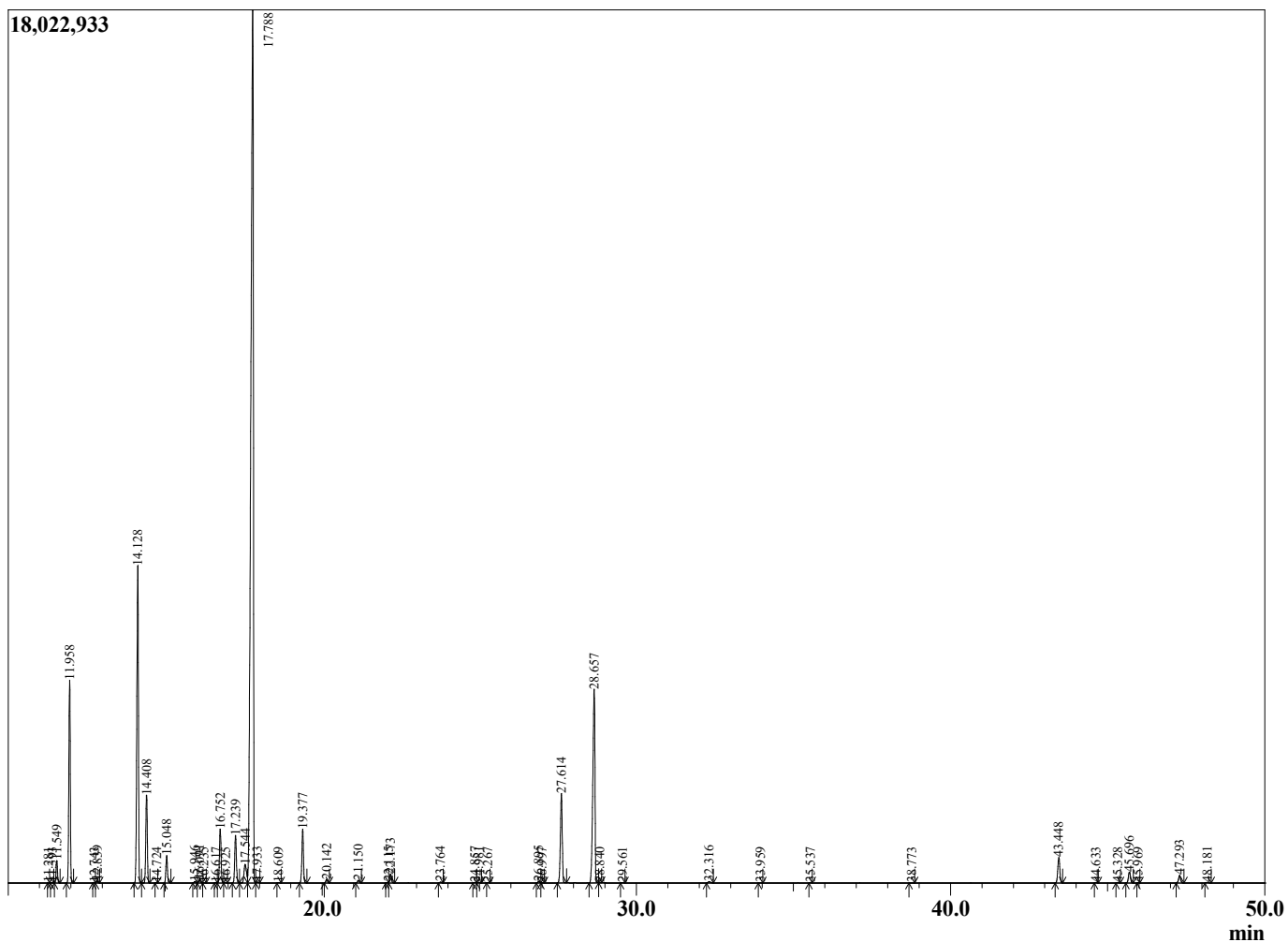
Sample Information

Sample Type : Essential Oil  
 Sample Name : Cinnamomum camphora  
 Injection Volume : 0.10

Ravintsara  
 Lot# MAH5-HE  
 Country: Madagascar



Chromatogram Cinnamomum camphora



R.Time	Name	Area%
11.281	Hashishene	0.00
11.393	Tricyclene	0.01
11.549	alpha-Thujene	0.74
11.958	alpha-Pinene	6.84
12.743	alpha-Fenchene	0.01
12.839	Camphene	0.07
14.128	Sabinene	11.95
14.408	beta-Pinene	3.06
14.724	Unidnetified	0.00
15.048	Myrcene	1.00
15.946	Pseudolimonene	0.05
16.091	alpha-Phellandrene	0.12
16.235	delta-3-Carene	0.01
16.617	1,4-Cineole	0.01
16.752	alpha-Terpinene	2.04
16.925	ortho-Cymene	0.01
17.239	para-Cymene	1.93
17.544	Limonene	1.09
17.788	1,8-Cineole	52.14
17.933	cis-beta-Ocimene	0.03
18.609	trans-beta-Ocimene	0.01
19.377	gamma-Terpinene	2.05
20.142	trans-Sabinene hydrate	0.14
21.150	Terpinolene	0.11
22.115	Linalool	0.03
22.173	cis-Sabinene hydrate	0.37
23.764	cis-para-Menth-2-en-1-ol	0.04
24.857	trans-Pinocarveol	0.02
24.981	trans-para-Menth-2-en-1ol	0.03
25.267	Unidentified	0.01
26.895	delta-Terpineol	0.06
26.997	Borneol	0.01
27.614	Terpinen-4-ol	3.97
28.657	alpha-Terpineol	9.74
28.840	Unidentified	0.01
29.561	trans-Piperitol	0.01
32.316	Linalyl acetate	0.07
33.959	trans-Ascaridol glycol	0.01
35.537	Unidentified	0.01
38.773	Terpinyl acetate analogue	0.01
43.448	trans-beta-Caryophyllene	1.22
44.633	Aromadendrene	0.01
45.328	Humulen-(v1)	0.01
45.696	alpha-Humulene	0.53
45.969	Unidentified	0.01
47.293	Germacrene D	0.37
48.181	Bicyclogermacrene	0.04
		100.00